

LucidShape Thermic Hot Spot Analysis for High Beam Headlamps

Paper #020-1

February 2016

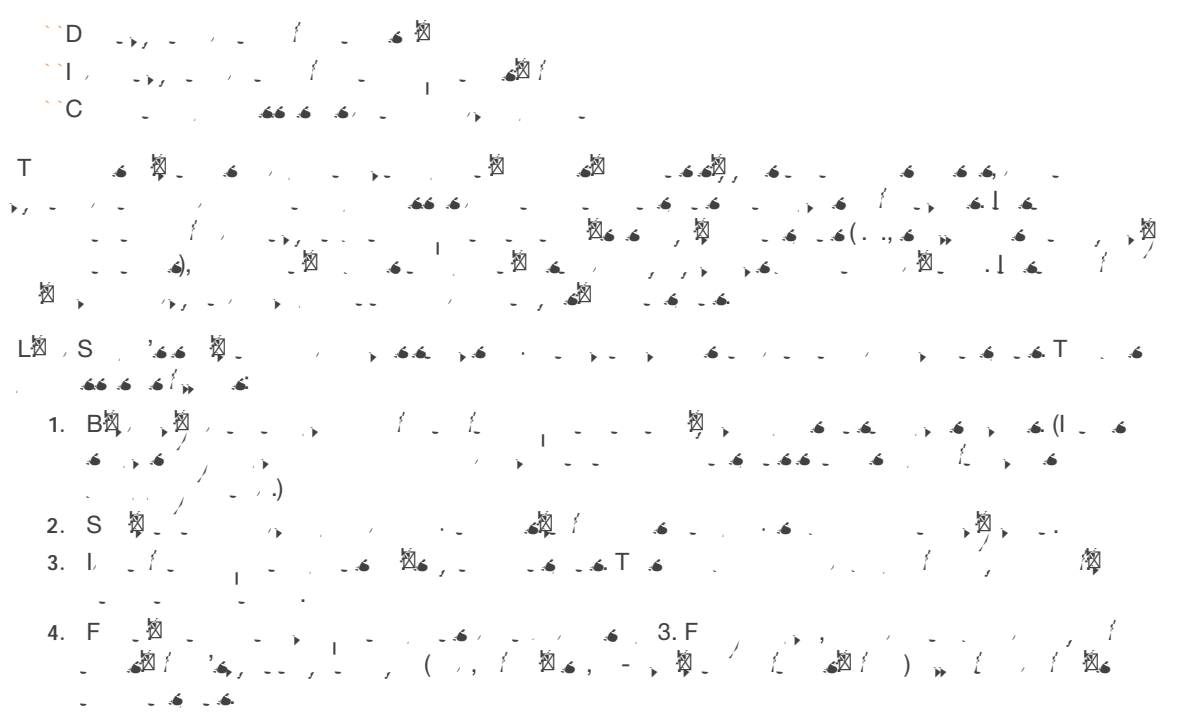
Author

Steffen Ragnow

Senior Engineer

Abstract

© softwareGenerally, heat flow inside a headlamp cavity is influenced by three sources:



Hot Spot Analysis in Practice

H, F, 3, 357000, T

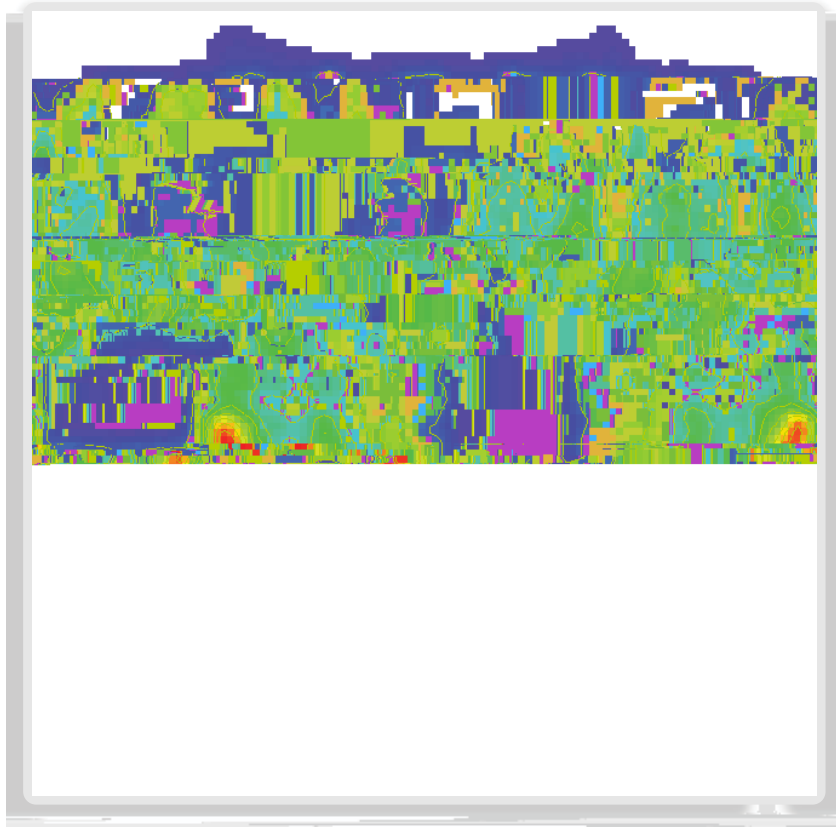


Figure 3. Lux distribution at 80 mm in front of high beam reflector. Hot spots reside in the red regions.

A (F, 4)

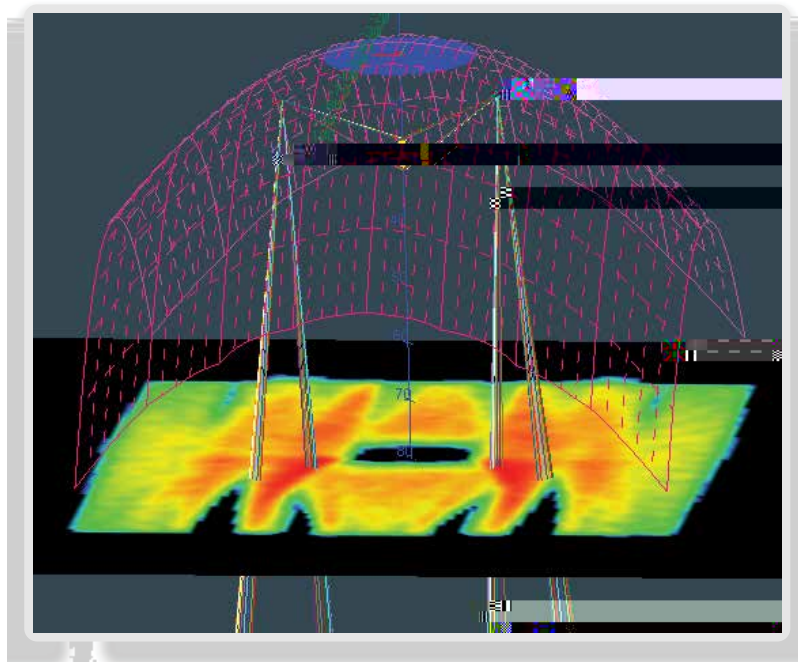


Figure 4. High Beam reflector with illuminated lux sensor (here in log scale) and interactive rays

I 3D T

N F, 5

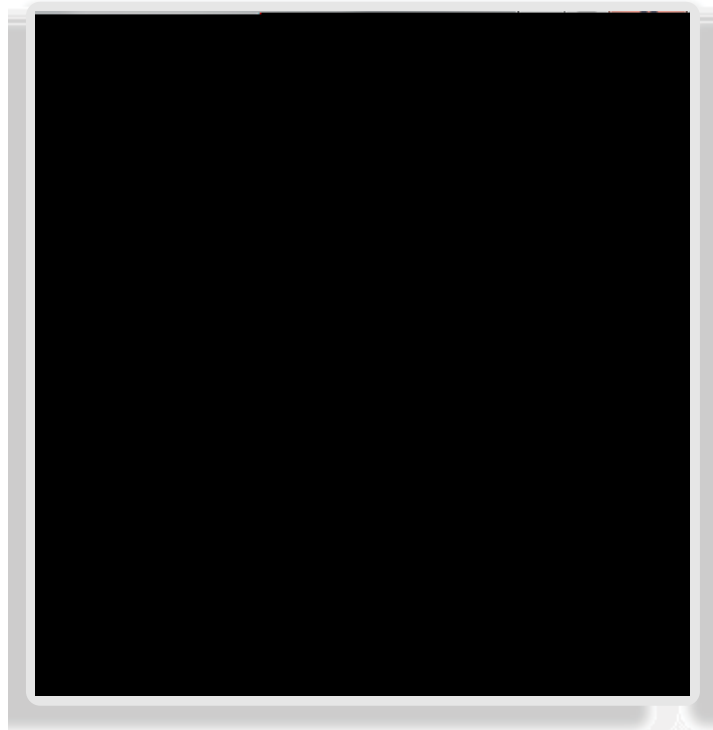


Figure 5. A critical surfaces construction dialog box

A -3,3 -9,9 . R

. 85, 25

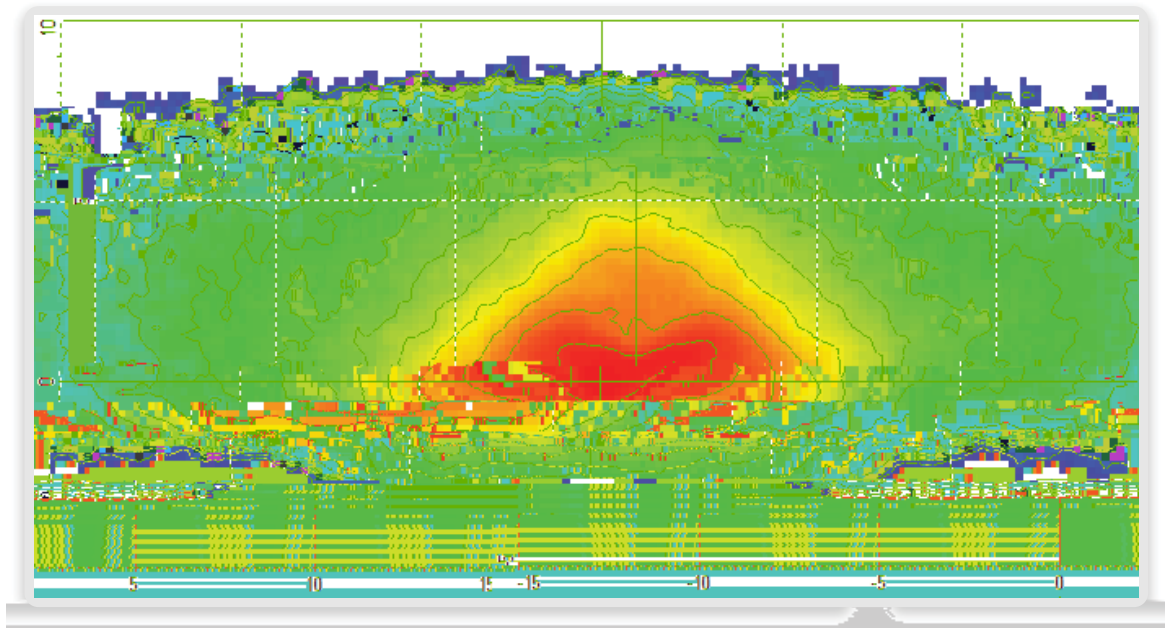
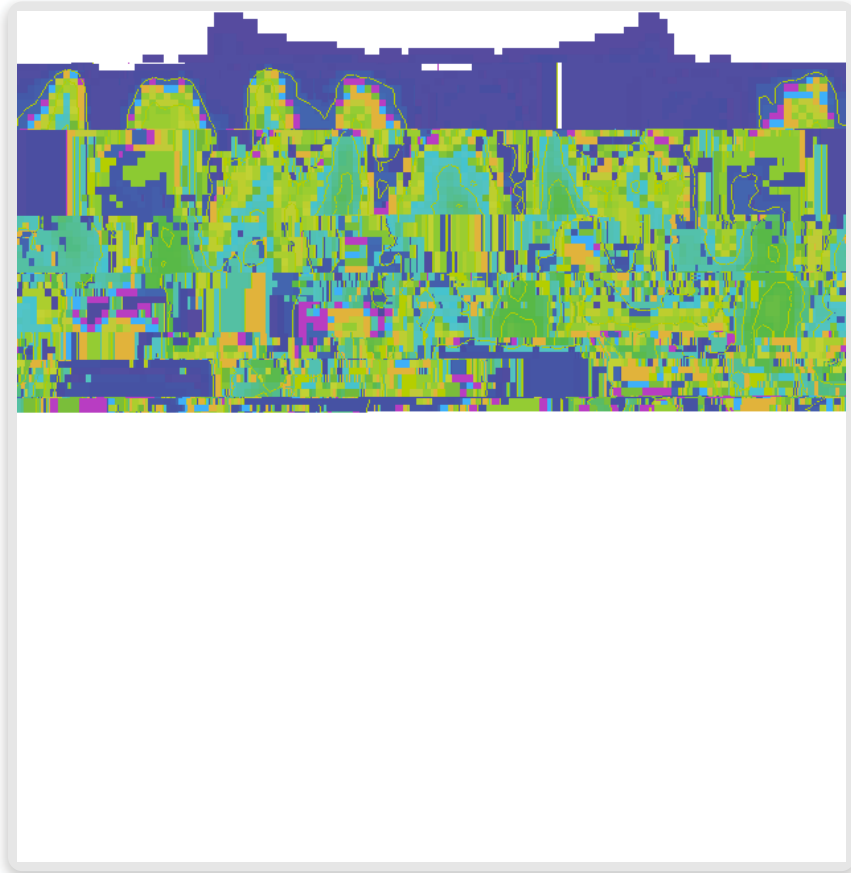


Figure 6. Candela distribution of de-focused high beam reflector

O 250000
 T
 F 7
 F 3



F 7 L 80

Conclusion

W L S
 U
 A

To Learn More

F L S S O S
 G (626) 795-9101 8:00 -5:00 PST, //
 @