

NCAM

NCAM

NCAM

ARC nSIMNCAM

KPI (1)

(2)

(3)

C++

NCAM

.CC

MetaWare
NCAM

(MDB) nSIM GUI

/

ARC

Profiling

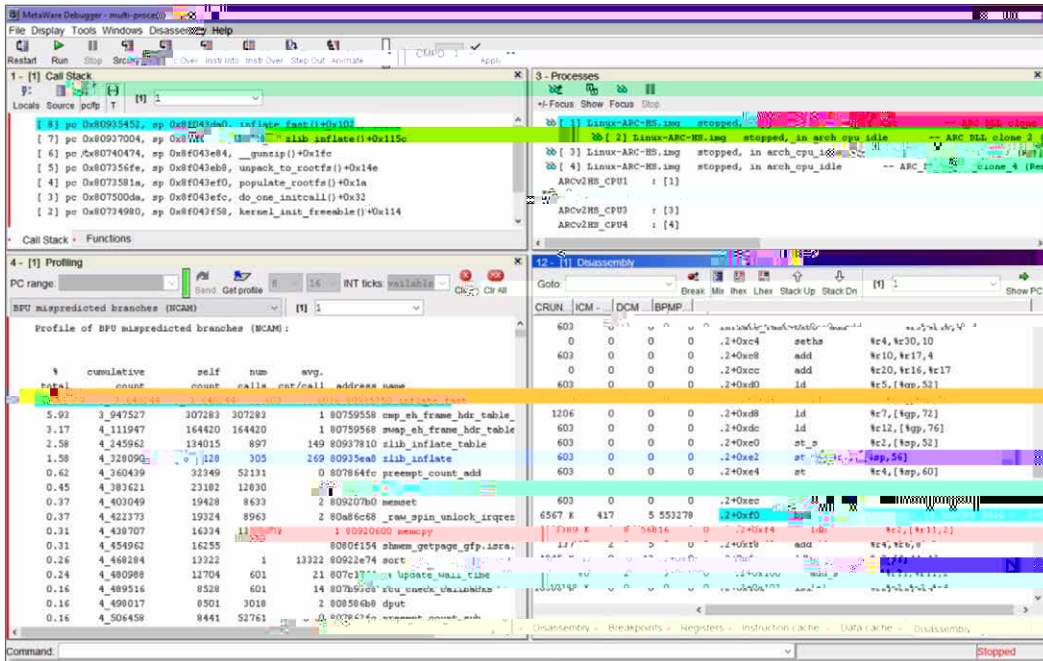
The screenshot shows the MetaWare Debugger interface with several panels:

- Call Stack:** Shows a list of function calls including `inflate_fast`, `__libc_inflate`, `quasip`, `unpack_to_roots`, `populate_roots`, `do_one_initcall`, and `kernel_init_freeable`.
- Processes:** Lists running processes such as `Linux-ARC-MS.img` and `ARCv2HS_CP02`.
- Disassembly:** Shows assembly instructions for memory operations like `lpsz`, `ld.ab`, `prefetch`, `ldl`, `or`, `lwr`, `st.ab`, `stf.ab`, `and.f`, `lpsz`, `ldf.ab`, and `lwr.f`.
- Profiling:** Displays various performance metrics including cache miss counts, instruction counts, and branch conflicts.

2 MDB NCAM

Source Disassembly Disassembly
CRUN ICM DCM

KPI Profiling Disassembly



3 MDB NCAM

Profiling

Disassembly

BPMP

C/C++

if/else

for/while

ARC nSIMNCAM—

NCAM

ARC nSIMNCAM

CPI

ARC nSIM/NCAM

NCAM

/

NCAM

NCAM

NCAM

-
-
- NCAM

-
-
-
-
-
-

NCAM

-
-
- NCAM
-
-
- NCAM

—

ARC xCAM RTL FPGA

—

ARC xCAM RTL FPGA